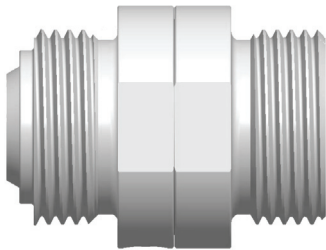


# HUSKY SWIVELS

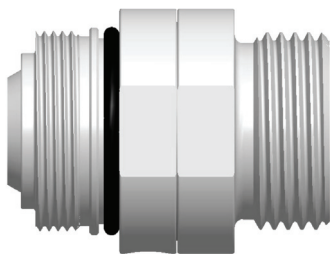
## DIESEL EXHAUST FLUID

### Husky DEF Inline Swivels.

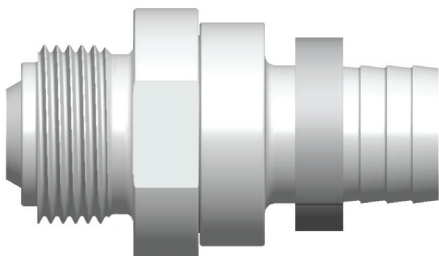
- Full 360° rotation for easy movement of nozzle.
- Relieves kinking and twisting of the hose.
- High flow rate featuring laminar flow design.
- Compact for easy handling.
- Unique to Husky products, the steel ball bearing design provides easier joint movement during high pressure applications.



Part #7269



Part #7275



Part #7282

### SPECIFYING INFORMATION

Model Number	Description	Weight lbs.(kg.)
7269	1" M x 1" M BSPP Inline Swivel	.60 (.27)
7275	1" M BSPP x M34 $\overline{A}$ Inline Swivel	.62 (.28)
7282	$\frac{3}{4}$ " M BSPP x $\frac{3}{4}$ " Hose Barb Inline Swivel	.42 (.19)

### CONSTRUCTION

Body     Stainless Steel

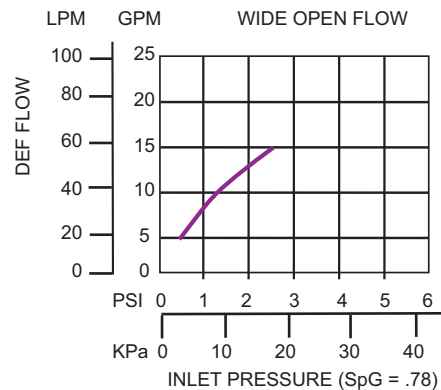
Seals     Fluorocarbon

### PATENTS

Patent Numbers:     Pending



MADE IN THE U.S.A.



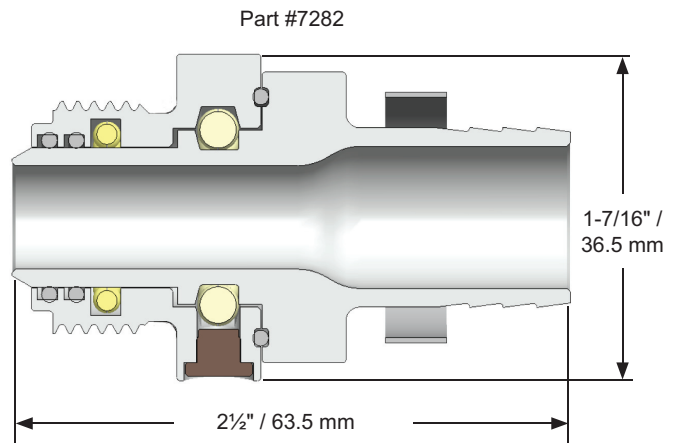
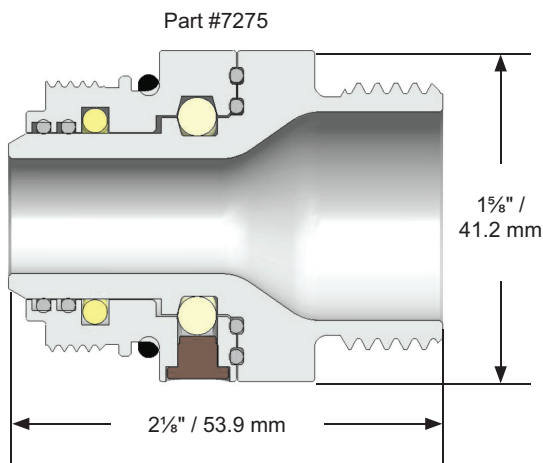
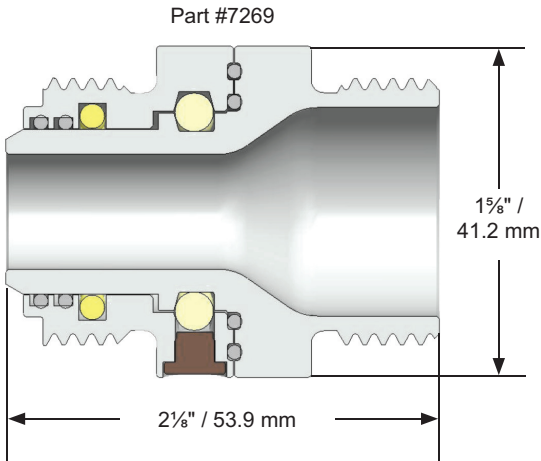
# HUSKY SWIVELS

## DIESEL EXHAUST FLUID

- **Dimensions**
- **Accessories**

### DEF Seal Kits

Model No.	Description
7522	3/4" BSPP Seal Kit Assembly
7523	1" BSPP Seal Kit Assembly



DIESEL EXHAUST FLUID

