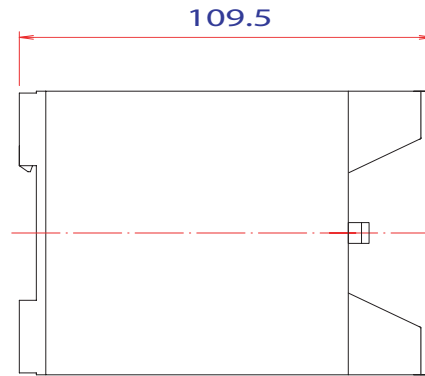
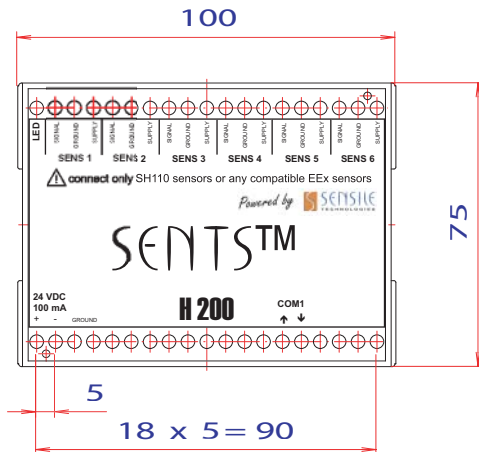


SENTS™ H200

TELEMETRY UNIT



Dimensions in mm

Scale 1:2

Technical specifications

Power supply

External power supply: 12-24 V DC +/- 10%
 Maximal consumption: 2.4 W
 Electrical connections: Screw clamps 2.5 mm²

Temperature ranges

Operating temperature: -20°C to 55°C
 Storage temperature: -20°C to 80°C

Inputs

Total: 6
 Power supplies: 5 V DC -20%, +2%, 2.5 mA
 Sensor inputs: 0 - 5 V ratiometric
 Full scale (FS): 5 V
 Resolution: < 0.1 % FS (10 bits)
 Accuracy: < 0.15 % FS
 Electrical connections: Screw clamps 2.5 mm²

Serial port interface

Connect up to 14 additional SENTS E200 extension units
 RX / TX connections: Screw clamps 2.5 mm²

GSM data communication

Communication via Short Message Service (SMS) standard
 Transmission of GSM network connection quality in each SMS,
 range from 0 to 31, minimum required value: 10

Protection standards

General protection: IP 40 / DIN EN 60529
 Housing material: ABS Plastic

Fixing

Rail DIN: DIN EN 60715 TH 35

Unit configuration possibilities via TS200 server software

Sensors sampling frequency: 1 per hour to 1 per week
 Data transmission frequency: 6 per day to 1 per week

Alarms:

"Low level" detection frequency: 1 per 15 min. to 1 per week

Direct request:

Receive at any time the updated measurements with a click on the TS200 server software (1 SMS is sent to the unit, which makes the measurements and sends an SMS back with the data)

EMC directives

This product complies with the following directives: Low Voltage 73/23/EEC, EMC 89/336/EEC & Terminal 1999/5/EC

ATEX directive

This product complies with the following directive: 94/9/EC

H200

II (1)G [EEx ia] IIC Certification Nr: SEV 05 ATEX 0101
 U0 = 8.0 V, I0 = 0.16 A, P0 = 0.285 W

FOR GROUP OF GAZ IIA

C0 = 1000 mF, L0 = 10 mH, L0/R0 = 0.9 mH/W

FOR GROUP OF GAZ IIB

C0 = 100 mF, L0 = 5 mH, L0/R0 = 0.45 mH/W

FOR GROUP OF GAZ IIC

C0 = 8.4 mF, L0 = 1 mH, L0/R0 = 0.1 mH/W

EEx sensor compatibility

Use only with EEx ia certified sensor



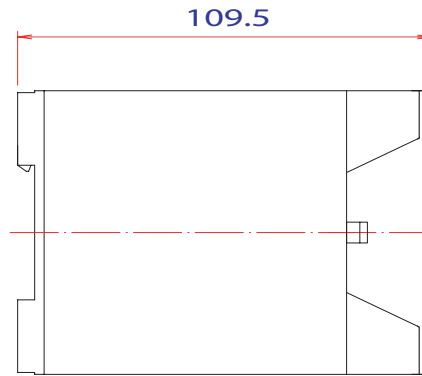
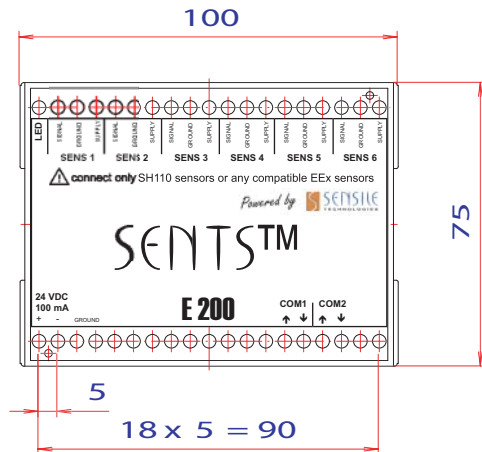
SENTS.TS.H200.ENG.101



Sensile Technologies SA, Parc Scientifique Ecublens, CH-1015 Lausanne
 Tel: +41 21 693 84 75 Fax: +41 21 693 84 27 info@sensile.com www.sensile.com

SENTS™ E200

EXTENSION UNIT



Dimensions in mm

Scale 1:2

Technical specifications

Power supply

External power supply: 12-24 V DC +/- 10%
 Maximal consumption: 2.4 W
 Electrical connections: Screw clamps 2.5 mm²

Temperature ranges

Operating temperature: -20°C to 55°C
 Storage temperature: -20°C to 80°C

Inputs

Total: 6
 Power supplies: 5 V DC -20%, +2%, 2.5 mA
 Sensor inputs: 0 - 5 V ratiometric
 Full scale (FS): 5 V
 Resolution: < 0.1 % FS (10 bits)
 Accuracy: < 0.15 % FS
 Electrical connections: Screw clamps 2.5 mm²

Serial port interface

Connect up to 14 SENTS E200 extension units to 1 single SENTS H200 telemetry unit
 RX / TX connections: Screw clamps 2.5 mm²

GSM data communication

Communication via Short Message Service (SMS) standard
 Transmission of GSM network connection quality in each SMS, range from 0 to 31, minimum required value: 10

Protection standards

General protection: IP 40 / DIN EN 60529
 Housing material: ABS Plastic

Fixing

Rail DIN: DIN EN 60715 TH 35

Unit configuration possibilities via TS200 server software

Sensors sampling frequency: 1 per hour to 1 per week
 Data transmission frequency: 6 per day to 1 per week

Alarms:

"Low level" detection frequency: 1 per 15 min. to 1 per week

Direct request:

Receive at any time the updated measurements with a click on the TS200 server software (1 SMS is sent to the unit, which makes the measurements and sends an SMS back with the data)

EMC directives

This product complies with the following directives: Low Voltage 73/23/EEC, EMC 89/336/EEC & Terminal 1999/5/EC

ATEX directive

This product complies with the following directive: 94/9/EC

H200

II (1)G [EEx ia] IIC Certification Nr: SEV 05 ATEX 0101
 U0 = 8.0 V, I0 = 0.16 A, P0 = 0.285 W

FOR GROUP OF GAZ IIA

C0 = 1000 mF, L0 = 10 mH, L0/R0 = 0.9 mH/W

FOR GROUP OF GAZ IIB

C0 = 100 mF, L0 = 5 mH, L0/R0 = 0.45 mH/W

FOR GROUP OF GAZ IIC

C0 = 8.4 mF, L0 = 1 mH, L0/R0 = 0.1 mH/W

EEx sensor compatibility

Use only with EEx ia certified sensor



SENTS.TS.E200.ENG.101



Sensile Technologies SA, Parc Scientifique Ecublens, CH-1015 Lausanne
 Tel: +41 21 693 84 75 Fax: +41 21 693 84 27 info@sensile.com www.sensile.com